

#57 TONAWANDAS

MONDAY THRU FRIDAY

TO MAIN & NIAGARA

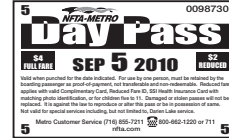
NIAGARA FALLS AIRPORT	N. FALLS BLVD. & WARD	MEADOW & PAYNE	MAIN & NIAGARA
A.M.	A.M.	A.M.	A.M.
A624	631	642	653
A656	703	714	725
A759	807	818	829
A930	938	949	1000
A1100	1108	1119	1130
P.M.	P.M.	P.M.	P.M.
A1230	1238	1249	100
A200	208	219	230
A309	317	329	340
A412	420	432	443
A509	517	529	540

FROM MAIN & NIAGARA

MAIN & NIAGARA	HACKETT & HINDS	MAIN & NIAGARA	MEADOW & PAYNE	N. FALLS BLVD. & WARD	NIAGARA FALLS AIRPORT
A.M.	A.M.	A.M.	A.M.	A.M.	A.M.
A700	709	A618	628	639	646
A835	844	718	730	741	748
		853	905	917	924
A1135	1144	A1018	1030	1042	1049
		1153	1205	1217	1224
P.M.	P.M.	P.M.	P.M.	P.M.	P.M.
A235	244	A123	134	146	153
		253	304	316	323
A503	511	A421	432	444	451
		520	531	543	550
		A555	606	618	625

♿ - All Metro service is accessible.

If you're boarding more than twice, Metro's Day Pass is the way to go.



Just \$4 available from your operator or Metro ticket vending machines

CASH FARES

	Full	Reduced*
Boarding Fare	\$1.75	\$.75

METRO PASSES

Pass Type	Full	Reduced*
Systemwide Day Pass	\$ 4	\$ 2
Systemwide Monthly Pass	\$64	\$32

Metro Monthly Passes are valid for unlimited rides during the month of issue. Monthly passes are good throughout the system. They can be purchased at participating Tops, Dash's, Budwey's, Wilson Farms and other area vendors. Check nfta.com for a complete list. Passes are also available at Metro ticket vending machines.

Metro Day Passes are valid on the service day of purchase (5 a.m. to 2 a.m.) and available at Metro ticket vending machines or from your bus operator.

TRANSFERS - TOKENS - FAREBOXES

Transfers are no longer available. Boarding fare or proof-of-payment is required each time you board a bus or train. **Free bus to rail proof of payment tickets** are available from bus operators and are valid for continuing your trip on Metro Rail or #8 Main buses only. A One-way Metro Rail ticket (not a Two-way ticket) is valid for continuing on a connecting metro bus.

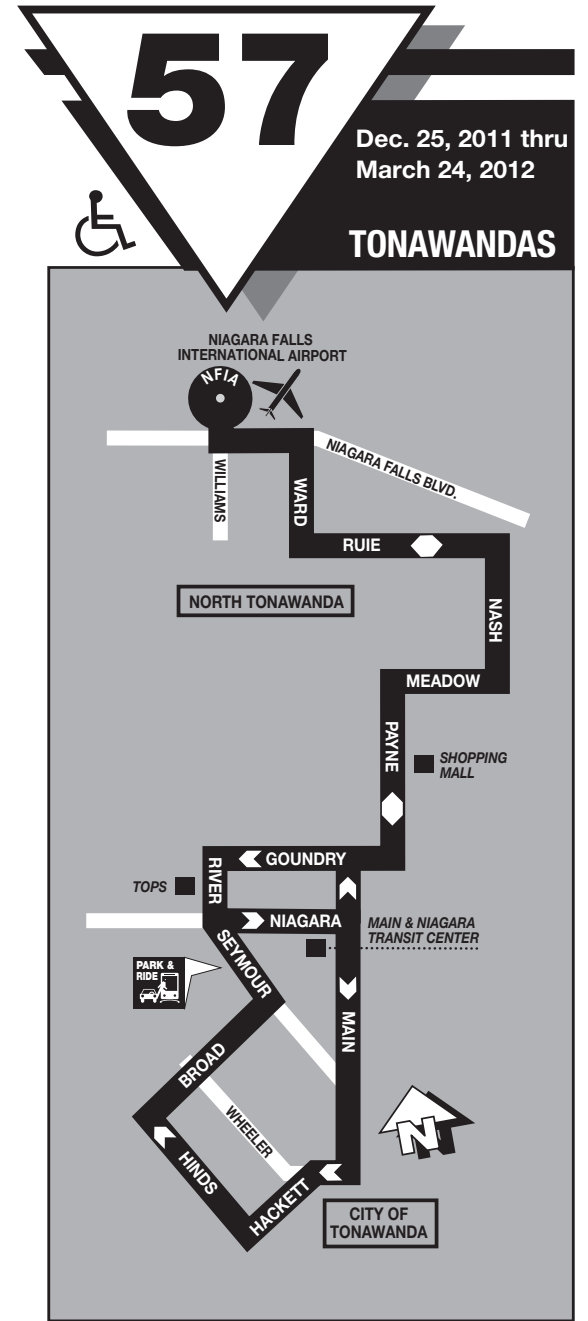
Token are no longer sold. Tokens will continue to be accepted as fare payment through August 2013.

Metro Fareboxes accept U.S. currency, Metro passes and Metro tokens. Remember, bus and trolley operators do not make change.

Please have your exact fare ready when boarding.

*Reduced fares are available for children five to 11 years old, seniors (65 and older), disabled and Medicare with proper ID. Children four and under ride free with an adult, limit three children per fare paying adult.

To qualify for reduced fares, passengers must present approved ID: Erie/Niagara County Complimentary Card, Metro Half-Fare Card or Medicare Card. Present when boarding your bus or when requested on Metro Rail.



Check timetable for possible schedule adjustments.

NFTA-METRO 855-7211
for information: www.nfta.com
TDD/Relay 711 or 1-800-662-1220